



Sunpure Extracts® Pvt Ltd



**ASHWAGANDHA BOOST®**  
**ASHWAGANDHA**



# Ashwagandha

**US DMF No: 034060**

Ashwagandha plant is a member of the Solanaceae family and has over 4,000 years of traditional use in its native India, Pakistan and Sri Lanka. It is a Medharasayan which is the Ayurvedic category of foods and nutrients that promote learning and memory retrieval. This plant is a Tonic and an Adaptogen. In the Middle East it is used to help promote normal sleep patterns and encourage a healthy inflammatory response.

Sunpure Ashwagandha is a powerful adaptogen derived from the roots of the *Withania somnifera* plant to provide optimal efficacy and bioactive diversity. The proprietary blend has been studied in numerous human clinical and pre-clinical trials to support its efficacy. Sunpure's ashwagandha has excellent applications in supplements, foods, beverages, and personal care products.

**Botanical Name:** *Withania somnifera*

**Common Name:** *Ashwagandha*

**Plant part used for extraction:** *Dried Roots only*

**Description:** *Greenish to yellowish brown coloured hygroscopic powder*

## Chemical constituents

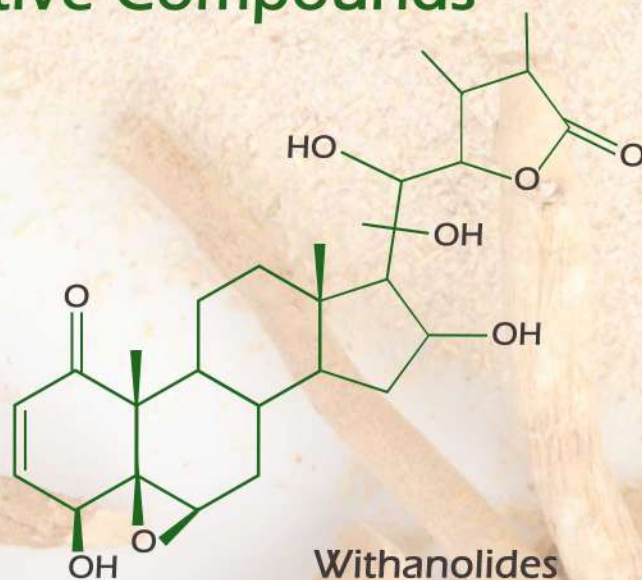
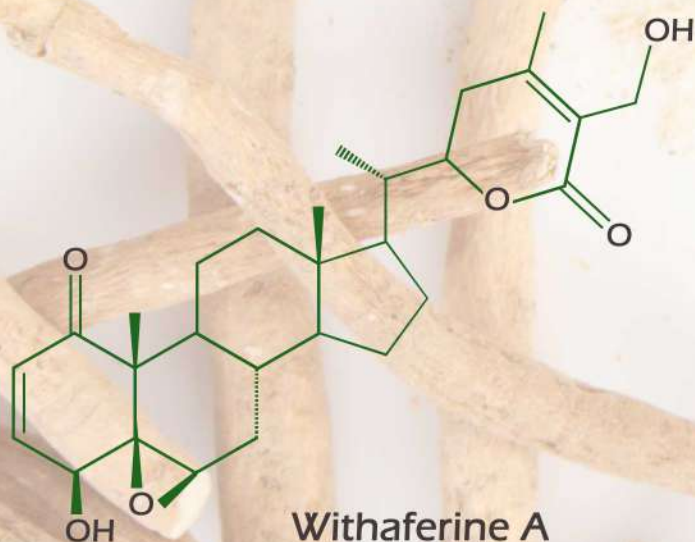
The main constituents of Ashwagandha are alkaloids and steroidal lactones. Among the various alkaloids, withanine is the main constituent. The other alkaloids are somniferine, somnine, somniferinine, withananine, pseudo-withanine, tropine, pseudo-tropine, 3- $\alpha$ -gloyloxytropine, choline, cuscohygrine, isopelletierine, anaferine and anahydrine. Two acyl steryl glucoside viz. sitoindoside VII and sitoindoside VIII have been isolated from root. The roots, contain steroidal lactones, which are commonly called withanolides. The withanolides have C28 steroidal nucleus with C9 side chain, having six membered lactone rings.

## Ashwagandha Grades we offer:

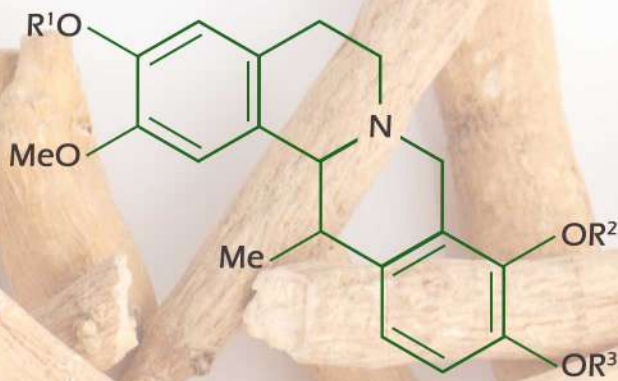
- Withanolides 1.5% to 10% standardized by HPLC
- Alkaloids more than 2%
- Withanolides 2.5% to 20% by Gravymetric
- Withaferin not more than 0.1%

**(Extract manufactured by using Ashwagandha Roots only)**

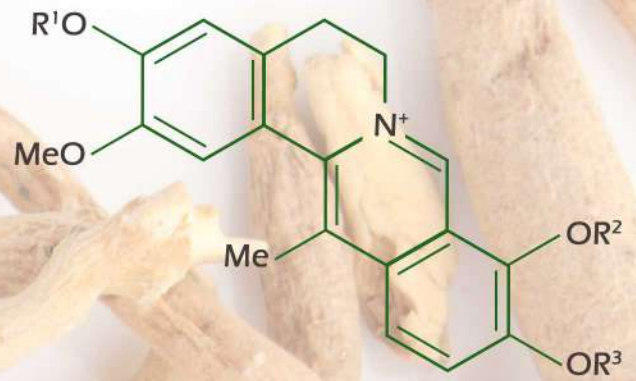
## Chemical Structure of Active Compounds







	R <sup>1</sup>	R <sup>2</sup>	R <sup>3</sup>
Corydaline	Me	Me	Me
Corybulbine	H	Me	Me
Cavidine	Me	-CH <sub>2</sub> -	



	R <sup>1</sup>	R <sup>2</sup>	R <sup>3</sup>
Dehydrocorydaline	Me	Me	Me
Dehydrocorybulbine	H	Me	Me
Dehydrocavidine	Me	-CH <sub>2</sub> -	

## Alkaloids

## Why SUNPURE's AshwaBoost®

- Processed from best quality of Ashwagandha roots only
- Standardized by HPLC to contain more than 10% Withanolides glycosides & 20% by gravimetric
- Standardized to contain less than 0.1% Withaferin A
- Clinical & pre-clinical studies
- HALAL & KOSHER certified
- Self-affirmed GRAS
- Non-GMO and Vegetarian
- Adaptogenic, Performance enhancer & Nootropic
- It is the highest concentration, most bioavailable full-spectrum root extract in the market today, retaining all the natural constituents of the herb in the original balance.
- Sunpure ashwagandha root extract (*AshwaBoost™*) with the most extensive set of research studies and clinical trials.

## Application of AshwaBoost® in Dietary Supplement & Sports Nutritions

- Helps to promotes sexual function in men and women
- Joint Health
- Helps to promotes muscle strength, size and recovery
- Anti-ageing
- Cardiac support
- Brain health
- Anti-anxiety

## Application of AshwaBoost® in Food and Beverages

- Ashwagandha supplied by Sunpure can easily blend into a range of food products. Thus, providing you food enriched with the wellness properties of Ashwagandha. Sunpure Ashwagandha can easily be added to:
  - Dairy Products
  - Nutritional bars
  - Confectionery
  - Beverages such as Tea/Green Tea/ Coffee /Energy drinks
  - Juices and Fruit blends



Sunpure Extracts Pvt Ltd has evolved a frontrunner in botanical extracts and nutraceutical ingredients in India & global platform with a cutting-edge cGMP Manufacturing Plant spread in pristine pollution-free environment, Sunpure Research Incubation Centre (SRIC) has team of dedicated scientists and full spectrum testing facilities. SRIC supports company in achieving new bioactives / derivatives along with filing DMFs, Dossiers, patents and working in compliance and tandem with Global Regulatory Bodies.



## CERTIFICATIONS



## Sunpure Extracts® Pvt Ltd

L-99 A, Pocket - L, Dilshad Garden, Delhi - 110095, INDIA

Tel: +91-11-22126629, +91-9205515570

Email: [info@sunpure.co.in](mailto:info@sunpure.co.in) | Web: <http://www.sunpure.co.in>

Manufacturing Base: E - 25, Industrial Area, Sikandrabad (U.P.) - 203205, INDIA